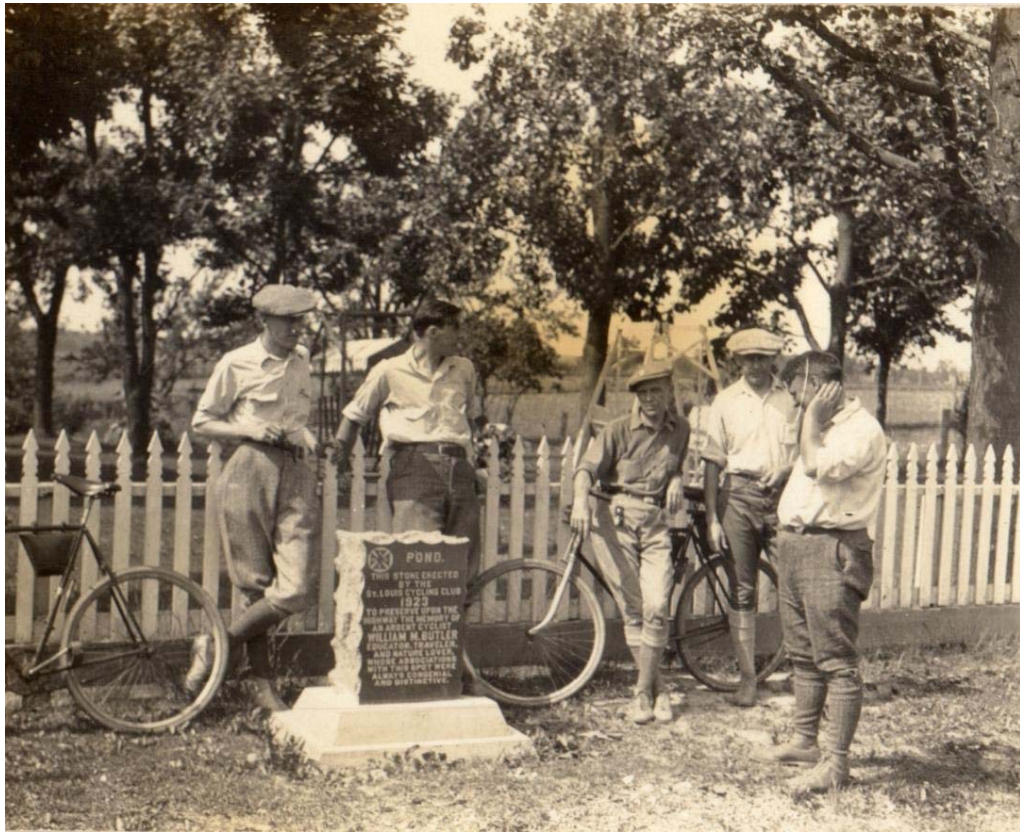




Photos Courtesy of the NELSON FAMILY



Photos Courtesy of the NELSON FAMILY

Automobile tour of  
St. Louis Cycling club Monuments  
Sunday Jan. 20, 1952

There have been erected in different parts of the county, four markers. The first one was at Frisco Hill on old Lemay Ferry road in 1919; the second at the county line on Manchester road on Smith's Hill in 1921. This marker had been situated exactly on the county line between St. Louis County and Franklin county but due to the change in the location of the new concrete Manchester road it was necessary to move the monument  $\frac{1}{2}$  mile farther in Franklin County. The third marker is at Bellefontaine, Mo. on Olive St. road and was erected in 1922. The fourth is at Pond, Mo. and was erected in 1923.

On Sunday, Jan. 20, 1952 A group of Cycling Enthusiasts took an automobile tour of these monuments. Our first meeting place was the Jefferson Memorial in Forest Park which we left at 9:30 A.M. and went west on Manchester road to Ken Connors bowling alley, just this side of Lindberg Blvd. where other members of the club were met.

At 10:30 we started west on the Manchester to Pond, Mo. where we inspected the monument and took pictures; then we went on to the next monument at County line. We had a little trouble in locating this one as it had been moved and Peg Martin acting as our guide on this trip had not seen the monument since it was in its new location. But we finally found it set in concrete about fifteen feet up on the side of a steep hill about  $\frac{1}{2}$  mile west of the County line on Manchester road. Again pictures were taken.

It was now time for our noon day meal, so it was decided to go farther on to the Diamonds on Highway 66.

After eating, we headed for the monument of Frisco hill on the old Lemay Ferry road. We took highway 66 in to highway 141 and then 141 across to the old Lemay Ferry road and then on to way up on Frisco Hill, where we found this marker, erected in 1919, to be in good condition. More pictures were taken.

We did not take in the marker at Bellefontaine, as most of us have seen it many times. We had a nice turn out for this tour and a beautiful day. The men members making the tour were Ver Alexander, Joe Gaffney, Dick Odien, Ken Connor, Fred Bruecker, Peg Martin, Chalmers Browne, Chester Nelsen and Herman Schulze. The Lady Members were Irene Alexander, Susan Connor, Alice Brueckner, Ethel Funke, Jane Nelsen and Virginia Schulze.

We covered about 120 miles for the days trip and saw some beautiful country and some beautiful hills. A good time was had by all.

*Herman H. Schulze.*